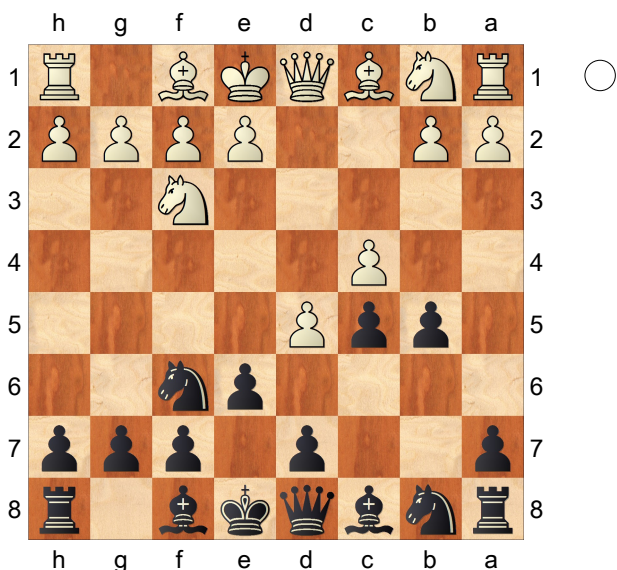
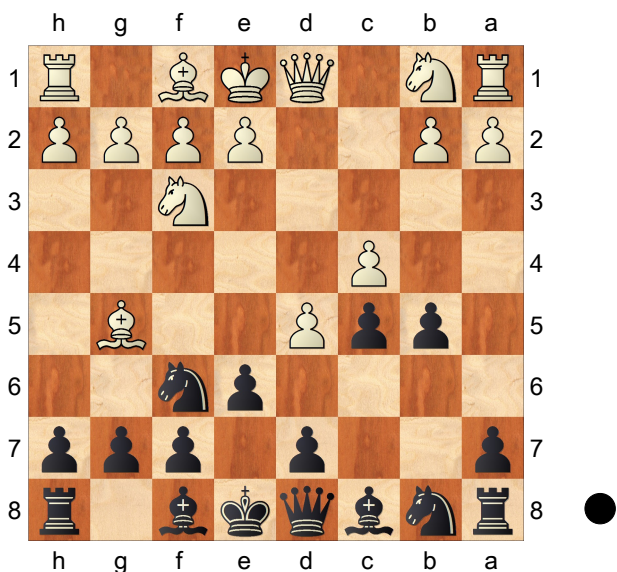


**1.d4 Nf6 2.c4 e6 3.Nf3 c5 4.d5 b5**  
Diagram



**5.dxe6** Prima Variante  
[ 5.Bg5 Diagram



Seconda Variante Qa5+ 6.Qd2  
Diagram ( 6.Nc3 Ne4 Diagram

(Diagram)

)  
6...Qxd2+ 7.Nfxd2 b4 ]  
**5...fxe6 6.cxb5 d5 7.e3** Diagram

